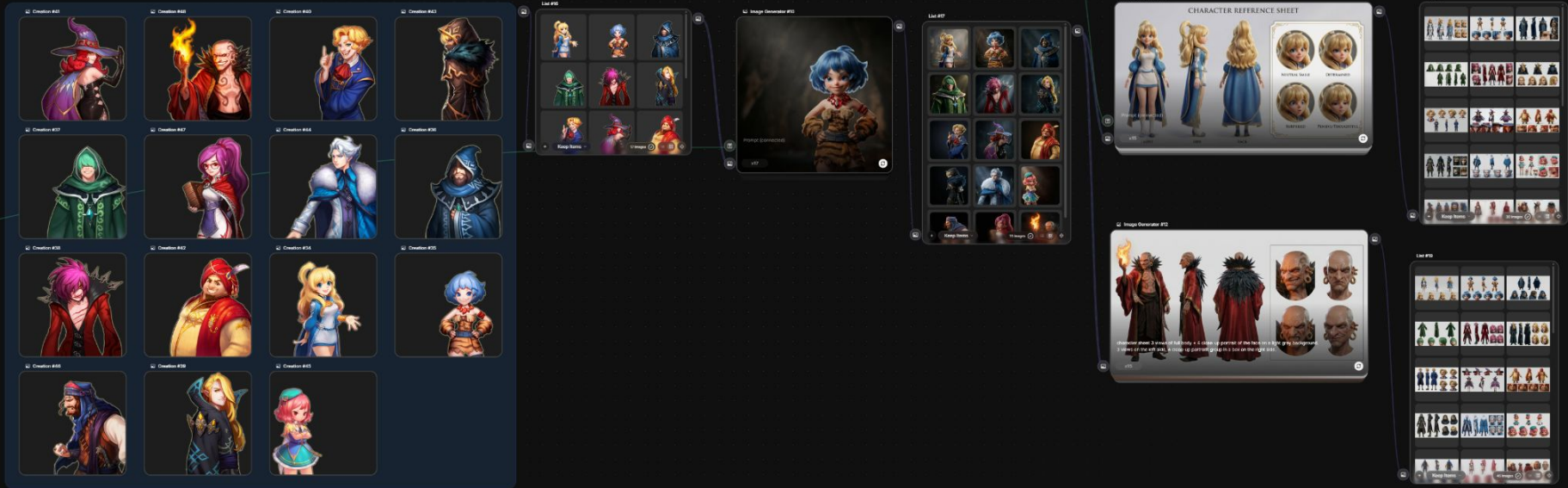


Workflow

SSUPERWASABI



Model: Nano Banana 2

Tool: Freepik Space

Work hour: 20 mins

Prompt: A highly detailed 3D render featuring photorealistic textures, volumetric lighting, and ray-traced reflections. The composition showcases the polished, high-definition quality of modern CGI, utilizing smooth gradients, cinematic depth of field, and vibrant, physically based rendering materials to create a stunningly immersive and tactile visual experience.



Input: 2D game NPC character art



Output: 3D UE Style Character



Input: 2D game NPC character art



Output: 3D UE Style Character



Input: 2D game NPC character art



Output: 3D UE Style Character

2D NPC Art → 3D UE Style art

SSUPERWASABI



Input: 2D game NPC character art



Output: 3D UE Style Character

2D NPC Art → 3D UE Style art

SSUPERWASABI



Input: 2D game NPC character art



Output: 3D UE Style Character

2D NPC Art → 3D UE Style art

SSUPERWASABI



Input: 2D game NPC character art



Output: 3D UE Style Character

2D NPC Art → 3D UE Style art

SSUPERWASABI



Input: 2D game NPC character art



Output: 3D UE Style Character

2D NPC Art → 3D UE Style art

SSUPERWASABI



Input: 2D game NPC character art



Output: 3D UE Style Character

2D NPC Art → 3D UE Style art

SSUPERWASABI



Input: 2D game NPC character art



Output: 3D UE Style Character

2D NPC Art → 3D UE Style art

SSUPERWASABI



Input: 2D game NPC character art



Output: 3D UE Style Character

2D NPC Art → 3D UE Style art

SSUPERWASABI



Input: 2D game NPC character art



Output: 3D UE Style Character

2D NPC Art → 3D UE Style art

SSUPERWASABI



Input: 2D game NPC character art



Output: 3D UE Style Character

2D NPC Art → 3D UE Style art

SSUPERWASABI



Input: 2D game NPC character art



Output: 3D UE Style Character



Input: 2D game NPC character art



Output: 3D UE Style Character

2D NPC Art → 3D UE Style art

SSUPERWASABI



Input: 2D game NPC character art



Output: 3D UE Style Character

2D NPC Art → 3D UE Style art

SSUPERWASABI



Input: 2D game NPC character art



Output: 3D UE Style Character

CHARACTER REFERENCE SHEET



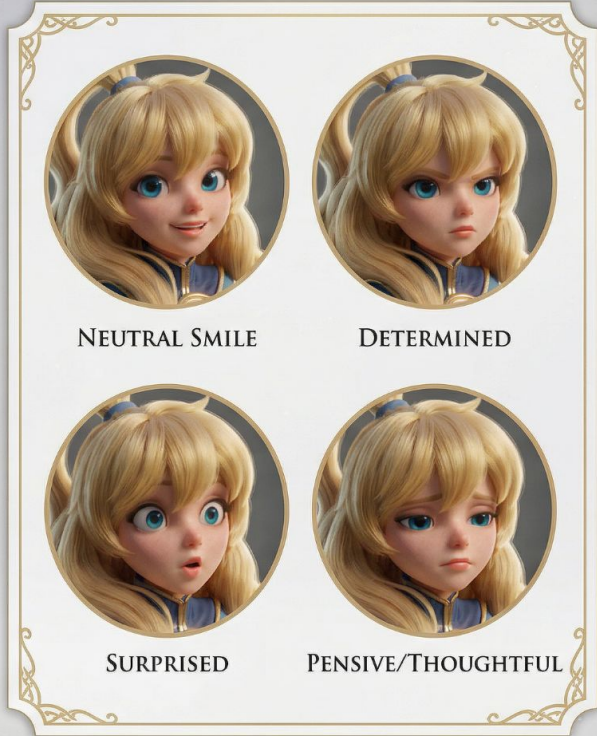
FRONT



SIDE



BACK



NEUTRAL SMILE



DETERMINED



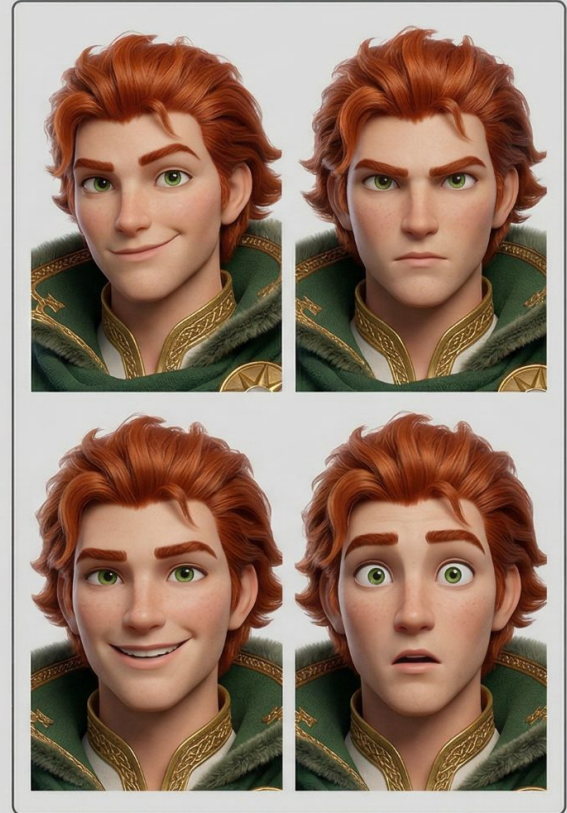
SURPRISED



PENSIVE/THOUGHTFUL

Character Sheet

SSUPERWASABI



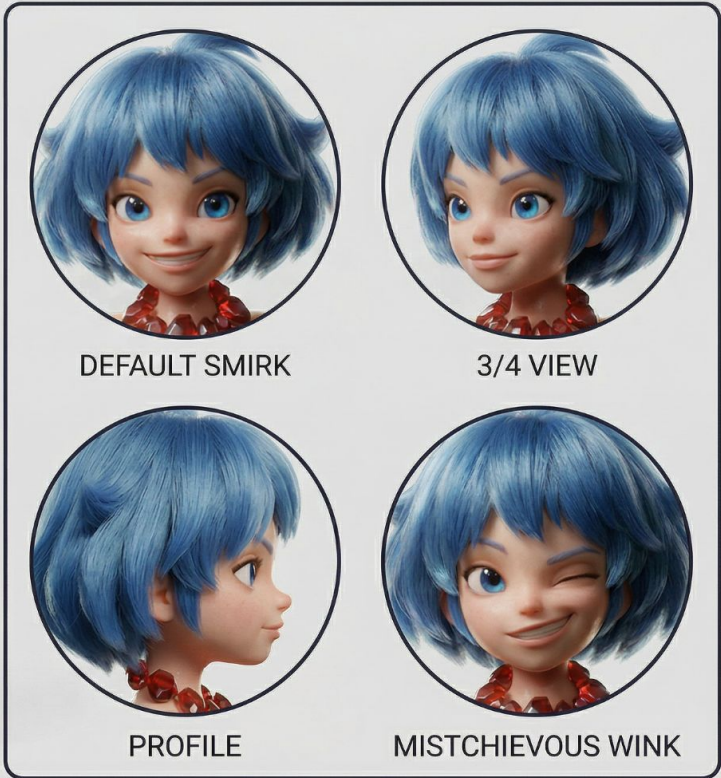


FRONT VIEW

SIDE VIEW
(PROFILE)

BACK VIEW

FACIAL DETAILS & EXPRESSIONS



DEFAULT SMIRK

3/4 VIEW

PROFILE

MISTCHIEVOUS WINK

Character Sheet

SSUPERWASABI



Front View



Side View



Back View



Portrait Detail 1



Portrait Detail 2



Portrait Detail 3



Portrait Detail 4

FULL BODY VIEWS (Front, Back, 3/4)



(1) FRONT VIEW



(2) BACK VIEW



(3) SIDE (3/4) VIEW

CLOSE-UP FACE PORTRAITS (Different Angles)



(A) PORTRAIT 1
(Frontal, Direct)



(B) PORTRAIT 2
(3/4 Face)



(C) PORTRAIT 3
(Profile)



(D) PORTRAIT 4
(Low Angle)

Character Sheet

SSUPERWASABI



FRONT VIEW

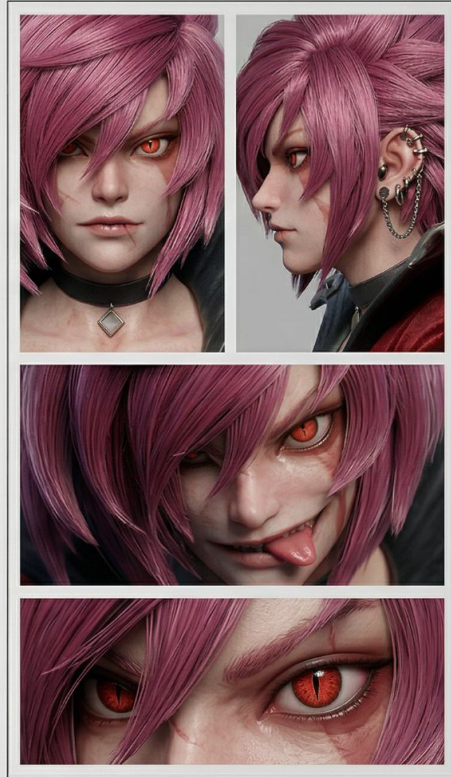


3/4 VIEW



BACK VIEW

PORTRAIT CLOSE-UPS



PORTRAIT CLOSE-UPS

ELVEN NOBLE: MIKAEL, HIGH-ELF MAGE CHARACTER SHEET



FRONT VIEW



SIDE VIEW



BACK VIEW



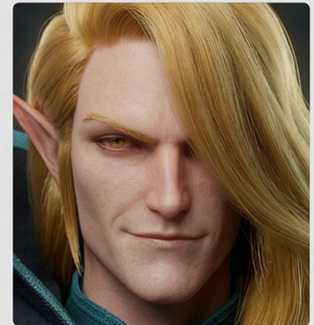
FRONT PORTRAIT



3/4 PORTRAIT



PROFILE PORTRAIT



CONFIDENT SMIRK PORTRAIT

Character Sheet

SSUPERWASABI



Full Body - Front



Full Body - Profile



Full Body - Back



3

4

Head Studies

Character Sheet



FRONT VIEW

FRONT VIEW



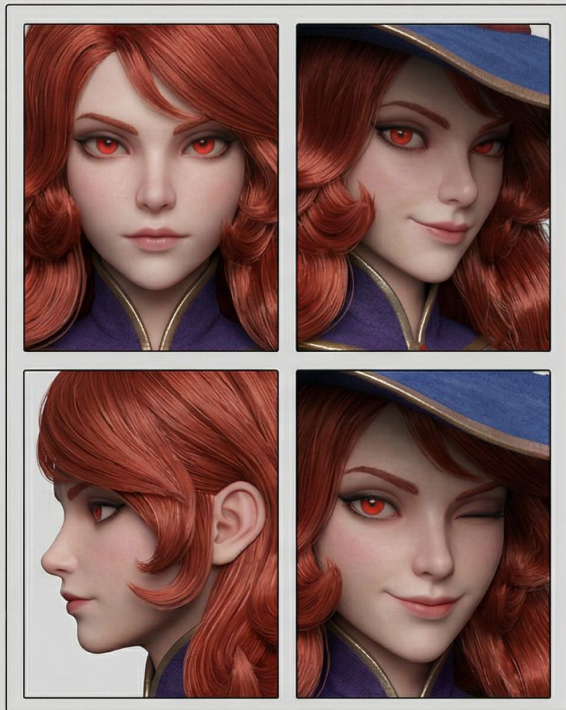
BACK VIEW

BACK VIEW



SIDE VIEW

SIDE VIEW



FACIAL DETAILS

Character Sheet

SSUPERWASABI



ASSASSIN CHARACTER SHEET



FRONT VIEW



PROFILE VIEW



BACK VIEW

DETAIL SHOTS



Original 3/4 Profile

Direct Front Close-up



Pure Profile Close-up

Slightly Elevated Rear Close-up

CHARACTER SHEET: THE SILVER-HAIRED ICE PRINCE

FULL-BODY VIEWS



FRONT



SIDE



BACK

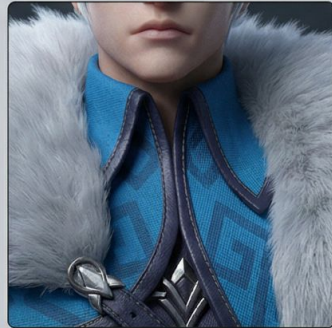
FACIAL EXPRESSIONS & DETAILS



DETERMINED



STERN



DETAIL: BUTTONS & TRIM



INTENSE

Character Sheet

SSUPERWASABI

CHARACTER DESIGN SHEET - TEAL DANCER (placeholder name)



Full Body - Front



Full Body - Back



Full Body - Profile



Garment Detail -
Shoulder and
Bodice



Close-up Face - Front



Face - Profile



Close-up 3/4 View



Face - Eye Detail

Character Sheet

SSUPERWASABI



Turban Jewel

Scar Detail

FRONT VIEW



PROFILE VIEW



BACK VIEW



DETAIL - PROFILE
(AS ORIGINAL)



DETAIL - FRONT



DETAIL - ANGLE 1



DETAIL - ANGLE 2

Character Sheet

FRONT VIEW



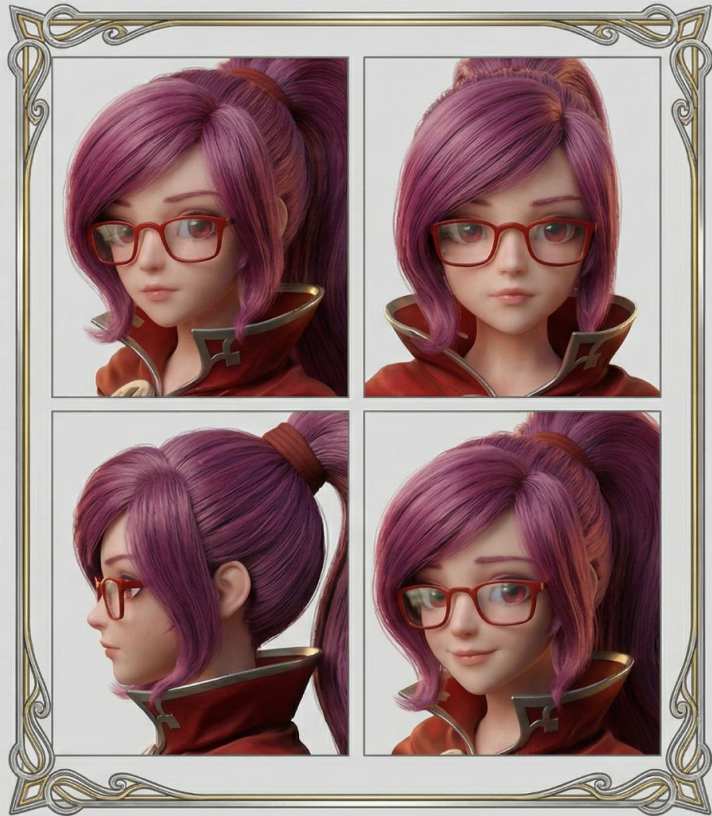
SIDE VIEW



BACK VIEW



FACIAL STUDIES



FIRE-SHAMAN DESIGN SHEET - MODEL #001



IRENE'S POLAR BEAR MOUNT - CONCEPT SHOWCASE



FRONT MODELS

FLANK ORNAMENT

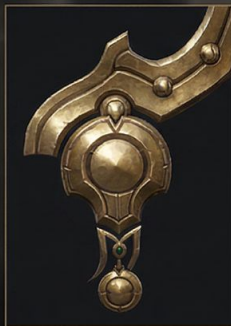
FLANK ORNAMENT



FACE ARMOR SHAPE



PAW DETAIL (4 CLAWS EACH)



FLANK ORNAMENT



LEG BEPLENICES